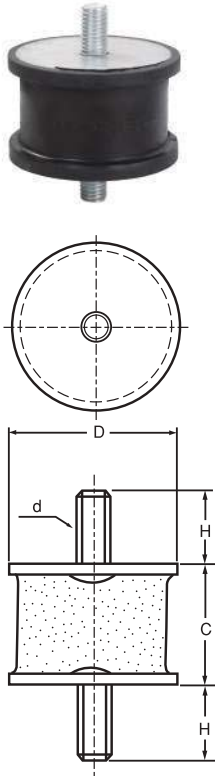


## ESA-I TYPE RUBBER ISOLATOR

### DIAMENSIONS



### FEATURES

- ⊙ EASY INSTALLATION AND PROVIDE GOOD STABILITY.
- ⊙ AVAILABLE IN BUTYL RUBBER, EPDN, NEOPRENE AND NATURAL RUBBER.
- ⊙ SPECIAL BOUNDING DESIGN TO ENSURE THE RUBBER AND METAL PROVIDE A GOOD ISOLATION.

### DATA

MODEL	D	C	H	d	LOADING Kgs
ESA-3I	16	15	12	M4	1-3
ESA-6I	16	15	12	M4	3-6
ESA-12I(M4)	16	15	12,16	M4	6-13
ESA-12I(M5)	16	15	12,16	M5	6-13
ESA-12I(M6)	16	15	12,16	M6	6-13
ESA-20I	20	15	16	M6	10-20
ESA-25I(S)	25	18	16	M6	13-25
ESA-25I(L)	25	34	16	M6	10-20
ESA-45I(S)	32	30	22	M8	20-50
ESA-45I(L)	32	37	15/22	M10	20-50
ESA-70I(S)	40	25	32	M10	40-75
ESA-70I(L)	40	37	32	M10	40-75
ESA-105I	54	45	32	M10	50-130
ESA-115I	54	30	32	M10	50-130
ESA-325I	72	45	32	M12	130-330
ESA-350I	75	42	55/55	M16/M22	200-400
ESA-595I	112	60	36	M14	330-600
ESA-600I	112	60	36	M14	300-600
ESA-650I	112	42	55	M22	400-700
ESA-900I	112	60	36	M14	450-900
ESA-995I	158	75	60	M16	600-1200
ESA-1800I	158	75	60	M16	900-1800
ESA-3500I	200	75	8	Ø24x8h	1500-3500
ESA-10000I	300	80	8	Ø24x8h	4200-10000

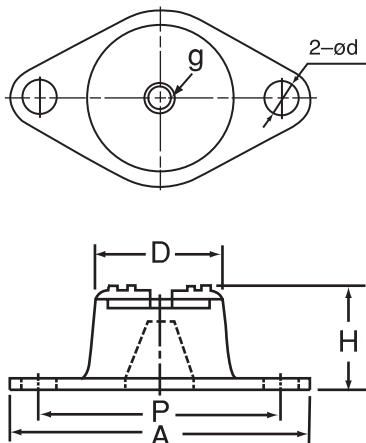
(m/m)

## ESA-J TYPE RUBBER ISOLATOR

### FEATURES

- ⊙ EASY INSTALLATION AND PROVIDE GOOD STABILITY.
- ⊙ AVAILABLE IN BUTYL RUBBER, EPDN, NEOPRENE AND NATURAL RUBBER.
- ⊙ SPECIAL HOLLOW DESIGN FEATURE PROVIDE RELATIVELY LOW ELASTIC MODULUS, EFFECTIVELY ISOLATED THE LOW FREQUENCY NOISE.
- ⊙ METAL PLATE ARE ELECTROPLATED FOR LONGER LIFE SPAN.
- ⊙ FOR INTERNAL COMBUSTION ENGINES, MOTOR, GENERATOR SETS, EXHAUST FANS, PUMPS AND ETC.

### DATA

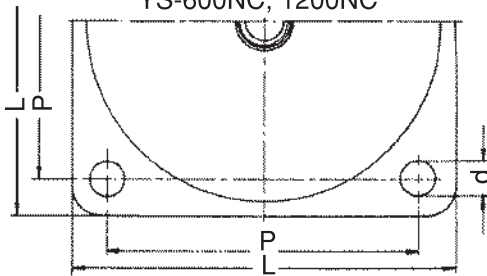
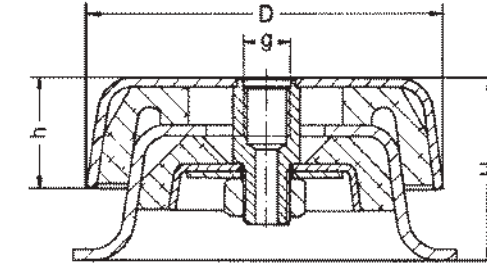
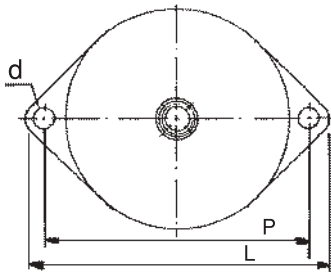
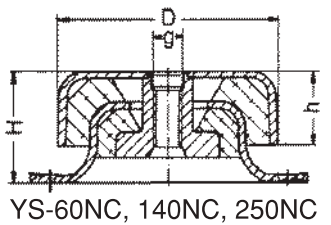


MODEL	A	P	D	d	H	g	LOADING Kgs
ESA-7J	60	48	14	6	15	M6XP1.0	3-12
ESA-50J	90	72	34	10	30	M8XP1.25	12-55
ESA-200J	120	100	55	12	40	M10XP1.5	50-210
ESA-500J	170	146	76	14	50	M12XP1.75	200-520
ESA-800J	200	170	116	14	71	M14XP2.0	500-850
ESA-1000J	200	170	116	14	71	M14XP2.0	700-1000

(m/m)

## NC - TYPE RUBBER ISOLATOR

### Structure



### Features

- ⊙ Simple installation and excellent fixture.
- ⊙ Non-sulfur bonding provides great safety.
- ⊙ Adoption of CR rubber provides durability, ozone resistance and longer lifetime.
- ⊙ The isolator is assembled with three layers of iron plate and 2 layers of rubber. This provides elasticity in every aspect, which is particularly suitable for mechanical equipment that has actions of upward pulling, downward pressing or shear force, at the same time.
- ⊙ Also applicable for the isolation of vibration and impact inside of vehicles, ships and airplanes, as well as windmills, power generators.

### Specification Table

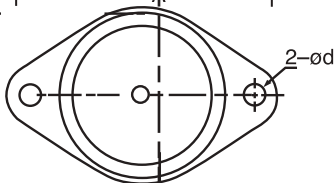
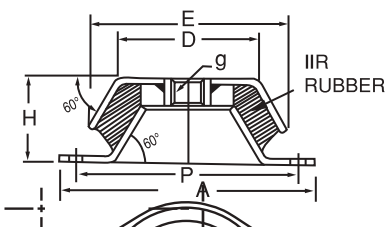


MODEL	LOAD RANGE (KGS)	L	P	D	d	g	H	h
ESA-60NC	20-70	105	86	62	8.5	M10	28	15
ESA-140NC	60-150	105	86	62	8.5	M10	28	15
ESA-250NC	140-350	117	94	76	8.5	M12	38	25
ESA-600NC	300-800	134	108	125	12	M14	65	33
ESA-1200NC	700-1500	176	144	170	14	M16	90	60

(mm)

## N - TYPE RUBBER ISOLATOR

### Structure



### Features

- ⊙ Simple installation and excellent fixture.
- ⊙ The iron plate is galvanized for rust proofing and longer lifetime.
- ⊙ The bowl-shape iron cover can resist oil, solvent and sun light, which protects the rubber and duration of usage.
- ⊙ Suitable for mechanical equipment, e.g. motors, power generators and air-conditioners.

### Specification Table

MODEL	A	P	D	E	H	d	g	LOAD RANGE (KGS)
ESA-120N	119	99	50	72	35	12	M10	40-130
ESA-220N	168	144	75	108	45	14	M12	100-230
ESA-350N	197	167	100	138	55	14	M16	200-380
ESA-700N	197	167	100	138	55	14	M20	400-1000
ESA-1800N	197	167	100	138	55	14	M20	1000-2500

(mm)

