



Email:
enquiry @aceflo.com



Website:
www.amegagr.com



Address:
No.611.19th Street .Watervliet New York 12189. USA



AMEGA GROUP

Partnership:
ACEFLO ENGINEERING PTE LTD
www.aceflo.com

DESIGNED BY AMEGA
PUMPS - MOTORS - SYSTEMS



AMEGA PUMPS



PT SERIES

SELF PRIMING SEWAGE PUMP



AMEGA GROUP

No.611.19th Street .Watervliet New York
12189.USA www.amegagr.com

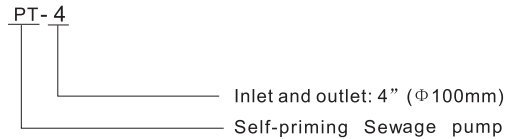
INTRODUCTION

PT Non-clogging self priming sewage pump is our latest developed product, and is suitable for the treatment project of municipal sewage and industrial sewage as well as stage treatment and concentrated treatment system of various sewages. It's known as "King of Self priming Sewage Pump", and the most ideal new-generation sewage product.

1、Application

- Non flammable and non-explosive liquid;
- Rain water and common sewage;
- Municipal drainage project, construction site, drainage station of people's air defense system;
- Industrial sewage of light industry, paper mill, textile, food processing plant, chemical industry, electric utility, deep mines, etc;
- Sewage discharge in the residential area;
- Sewage and deposit of water purifying system;
- Tanning industry, sewage of slaughter house, fish breeding in the river and pond;
- Wine and sugar industry;
- Sewage discharge not having strong corrosiveness but seriously polluted.

2、Model Code



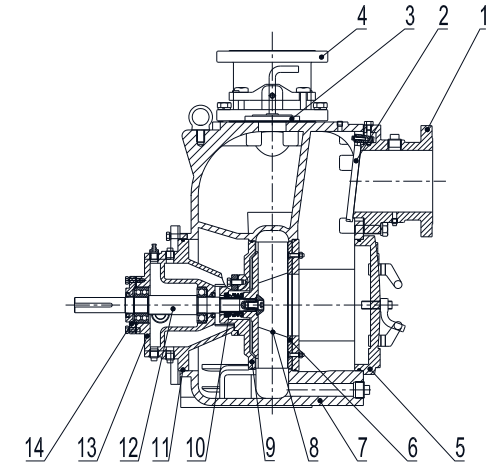
3、Operating condition

- Liquid temperature: 0℃-40℃, medium density $\leq 1.2 \times 103 \text{kg/m}^3$, PH5-9;
- Volume ratio of solids in the medium $\leq 2\%$;
- Diameter of maximum grain free pass: PT-2:44mm; PT-3: 63mm; PT4~8: 76mm
- Ambient temperature: $\leq 40^\circ\text{C}$;
- Altitude: Max. 1,000m;
- Max. working pressure: see Performance Curve;
- Max. Suction head: see Performance Table.

4、Features

- Stable performance, reliable operation;
- The motors clockwise rotation from drive;
- The pump shall be installed on the pedestal, axial suction and radial discharge;
- Back-pull-out construction: Convenient for maintenance and troubleshooting. Daily maintenance can be performed rapidly by common head tools, saving time and labor; The removable cover plate with handle and pusher bolt can provides access to the pump interior without disconnecting piping easily. Clogs can be removed and the pump can be returned to service in minutes.
- Semi-open impeller structure and non-clogging design: Strong passing capacity.
- Convenient usage: The pump can be mounted high and dry at floor level. With only the suction line down in the liquid(the pump shall be filled with water for first start).

SECTION DRAWING

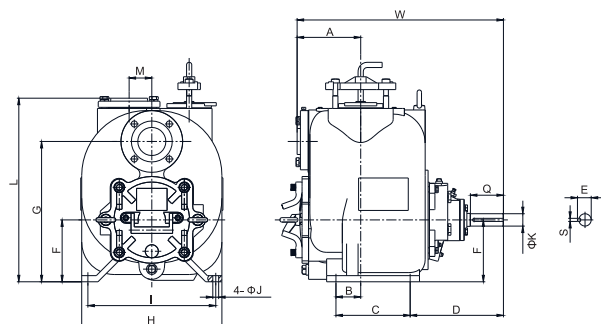


NO	Parts name	Material	NO	Parts name	Material
1	Suction Inlet	HT250	8	Impeller	QT500
2	Flap Valve	NBR+Carbon steel			SS304/SS316
3	Infusion cover	HT250	9	Impeller Cover	HT250
4	Discharge Outlet	HT250	10	Mechanical Seal	Sic/Sic/Viton
5	End Cover	HT250	11	O-Ring	NBR
6	Wear Plate	QT500	12	Shaft	SS420
7	Volute	HT250	13	Bearing Body	HT200
			14	Bearing Cover	HT200

Performance Table

Model	Speed (rpm)	Max Q (m^3/h)	Max H (m)	Npsh (m)	Power (HP)	Max Solids (mm)	Net Weight (kgs)
PT-2	1150~2900	46	35	7.3~7.6	1~10	44.45	100
PT-3	650~2150	110	35	1.5~7.6	1~20	63.5	186
PT-4	650~1950	160	36	1.5~7.6	1~30	76.2	280
PT-6	650~1550	350	32	2.4~7.6	2~40	76.2	438
PT-8	650~1450	600	36.5	2.7~7	7.5~75	76.2	655

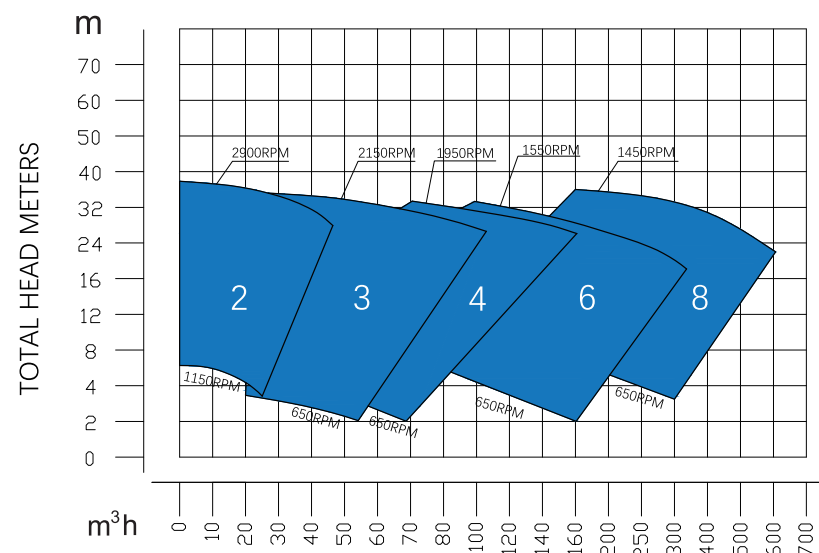
OUTLINE DIMENSIONS (Unit: mm)

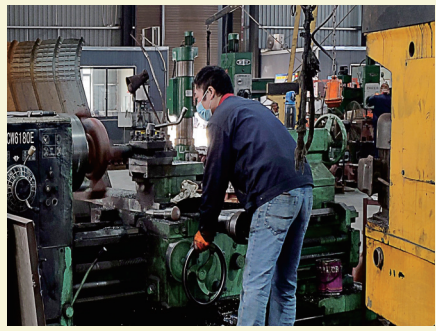


Pump Model	Pump Dimension						Foot Dimension						Shaft Dimension				Wight (kgs)
	L	G	F	M	W	A	J	I	H	B	C	D	K	Q	S	E	
PT-2	430	318	151.5	69.9	520.5	141	14	281	308	54	163.2	270.3	38.1	101.6	9.6	42.3	95
PT-3	565	431.8	190.5	69.9	625.2	185.7	18	393.7	431.8	76.2	228.6	287.1	38.1	101.6	9.6	42.3	183
PT-4	654	495.3	222.3	69.8	724	227	18	457.2	508	77.9	279.4	295.5	38.1	127	9.6	42.3	261
PT-6	759	568.2	257.2	69.8	765	268	18	527	577.8	77.7	279.4	295.3	38.1	127	9.6	42.3	365
PT-8	960	723.9	330.2	-	1025	411.7	23	635	705	101.6	304.8	410.1	44.4	171.4	9.6	48.7	582



PERFORMANCE CHARTS





OUR PURSUIT OF QUALITY IS ALWAYS THE SAME.

